

KILN & LODGE

ESTATE AGENTS : REDEFINED



26 Raphaels, Basildon, SS15 5EA

Welcome to this charming mid-terrace house located in the heart of Basildon. This delightful family home boasts a warm and welcoming atmosphere, perfect for creating lasting memories.

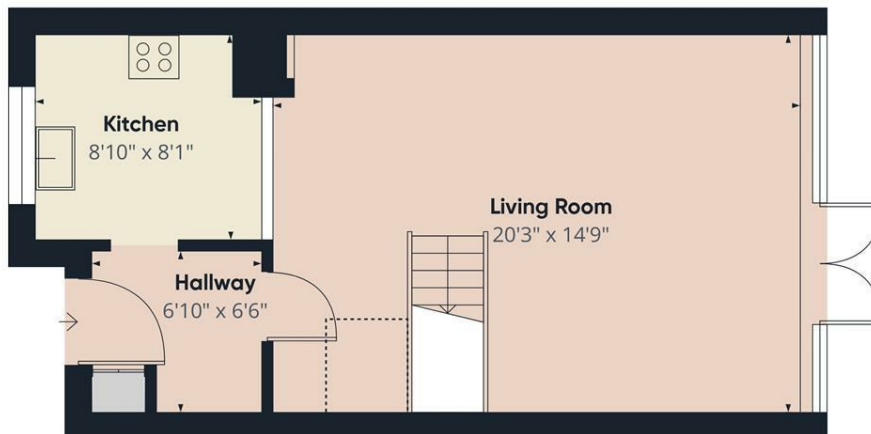
As you step inside, you are greeted by a cosy reception room, ideal for relaxing with loved ones. The property features three well-proportioned bedrooms, offering ample space for the whole family to unwind and recharge.

Situated conveniently close to schools, this home is perfect for families with children, ensuring a stress-free school run each day. Additionally, its proximity to the town centre provides easy access to a variety of amenities, making daily errands a breeze.

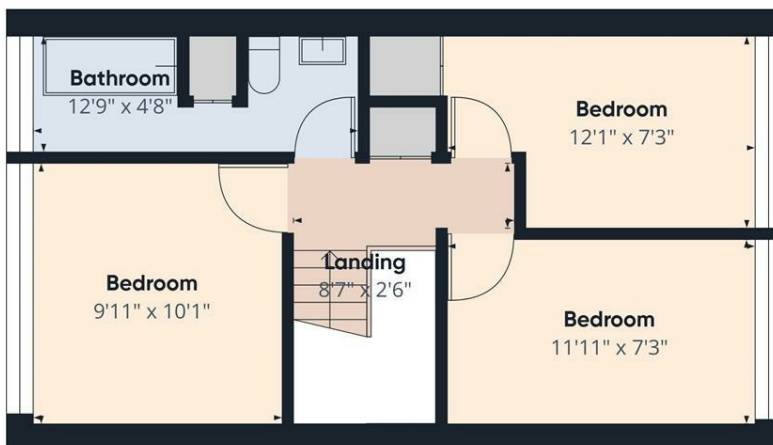
Maintained in good condition, this property is ready for you to move in and add your personal touch. Whether you are looking for a family home or an investment opportunity, this charming house offers endless possibilities.

- No Onward Chain
- Three Bedrooms
- Well Presented
- Good Size Rear Garden
- Close to Schools
- Close to Town Centre
- Garage

£310,000



Floor 0



Floor 1

Approximate total area^m

796 ft²

Reduced headroom

10 ft²

(1) Excluding balconies and terraces

Reduced headroom

Below 5 ft

Calculations reference the RICS IPMS 3C standard. Measurements are approximate and not to scale. This floor plan is intended for illustration only.

GIRAFFE360

